

SHORT BIO

I received my BSc degree in Electronic Information Technology at Wuhan University, China in 2008. Then I went to Institute of Geology and Geophysics, Chinese Academy of Sciences for the PhD degree study, in the major of Geomagnetic Field and Space Physics, supervised by Prof. Aimin Du.

During the PhD period I visited ISTERre (Grenoble, France) and DTU space (Denmark) for doing researches on geomagnetic secular variations and satellite data analysis. After graduated, I was offered a post-doctoral position at IGGCAS at the end of 2014. At this post-doctoral period I joined the Chinese Mars Rover project, and other satellite research programs for magnetic data processing.

From July 2020 till now I was offered a position as assistant professor at the State Key Laboratory in Macau, China, affiliated with the Chinese Space Admin. I currently take part in the Macau's Scientific Satellite mission, which will be launched in 2022, for magnetic data analysis and field modelling.

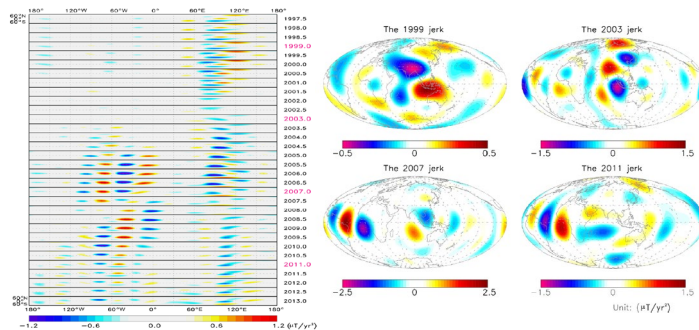
Asst. Prof.

JIAMING OU



PhD: Geophysics, Institute of Geology and Geophysics, Chinese Academy of Sciences, China;

BSc: Electronic Information Technology, Wuhan University, China



Geomagnetic Jerks- Ou et al., 2016

KEY PUBLICATIONS *(first author)*

Ou, J., Du, A., & Finlay, C. C., Quasi-biennial oscillations in the geomagnetic field: their global characteristics and origin, *Journal of Geophysical Research*, 2018, 122 (5).

Jiaming Ou, Aimin Du, Wenyao Xu, Investigation of the SA evolution by using the CHAOS-4 model over 1997-2013, *Science China Earth Sciences*, 2016, 59 (5): 1041-1050.

Jiaming Ou, Nicolas Gillet, Aimin Du, Geomagnetic observatory monthly series, 1930 to 2010: empirical analysis and unmodeled signal estimation, *Earth Planets and Space*, 2015, 67 (1): 1-20.

Jiaming Ou, Aimin Du, E. Thébault, Wenyao Xu, Xiaobo Tian, Tielong Zhang, A high resolution lithospheric magnetic field model over China, *Science China Earth Sciences*, 2013, 56 (10): 1759-1768.

PROFESSIONAL EXPERIENCE

2019-Present, Assistant Professor, State Key Laboratory of Lunar and Planetary Sciences, Macau University of Science and Technology

2014-December 2019, Posdoctor, Institute of Geology and Geophysics, Chinese Academy of Sciences, China

GRANTS

National Basic Research Program of China (2014-2018) (Co-Investigator);

National Natural Science Foundation of China (2016-2018) (Principal Investigator);

China's National Space Administration (2020-2022) (Principal Investigator);

Opening fund of SSI(2021-2022) (Principal Investigator)